



(/about.html)

Jean Prouvé and the SCAL, Issoire (1939) (<http://www.daniellaondesign.com/blog/jean-prouve-and-the-scal-issoire-1939>)

5/13/2015

0 Comments (<http://www.daniellaondesign.com/blog/jean-prouve-and-the-scal-issoire-1939#comments>)



Galerie Downtown's efforts in promoting research, in collecting building and furniture by Jean Prouvé, and in disseminating the taste for the industrial aesthetics that he created is superb. An upcoming exhibition, curated by Hélien Serre will provide a rare opportunity to see a dismantlable house which Prouvé created in 1939, in the same location for which it was created, the city of Issoire, which is located on the Couze River. Most houses we see in such exhibitions as the recent show at Gagosian were created in the postwar years, whereas this one, designed by Pierre Jeanneret, and carried out for the Société central des alliages légers—the Light Alloy Company at Issoire was designed and produced in pre WWII. One of the earliest buildings to be made with central portal frame, it also marked the beginning of historical collaboration between Prouvé and Jeanneret. For the Issoire site, the Jean Prouvé Workshops supplied the metal components of the structure and the Bureau Central de Consturction provided the wooden components and was responsible for the installation and delivery of the finished buildings. Serre will present furniture from the collection of Galerie Downtown in the building.

(<http://www.daniellaondesign.com/blog/jean-prouve-and-the-scal-issoire-1939>)

noguchi



(https://www.youtube.com/channel/UCeTRECp_BaeVIsGmLKIWoLg)

MY VIDEOS

NEWSLETTER

Email *

Sign up

 RSS Feed (/2/feed)

ARCHIVES

March 2015
(/blog/archives/03-2015)
February 2015
(/blog/archives/02-2015)
January 2015
(/blog/archives/01-2015)
December 2014
(/blog/archives/12-2014)
November 2014
(/blog/archives/11-2014)
October 2014
(/blog/archives/10-2014)
September 2014
(/blog/archives/09-2014)
August 2014
(/blog/archives/08-2014)
July 2014 (/blog/archives/07-2014)
June 2014
(/blog/archives/06-2014)
May 2014
(/blog/archives/05-2014)

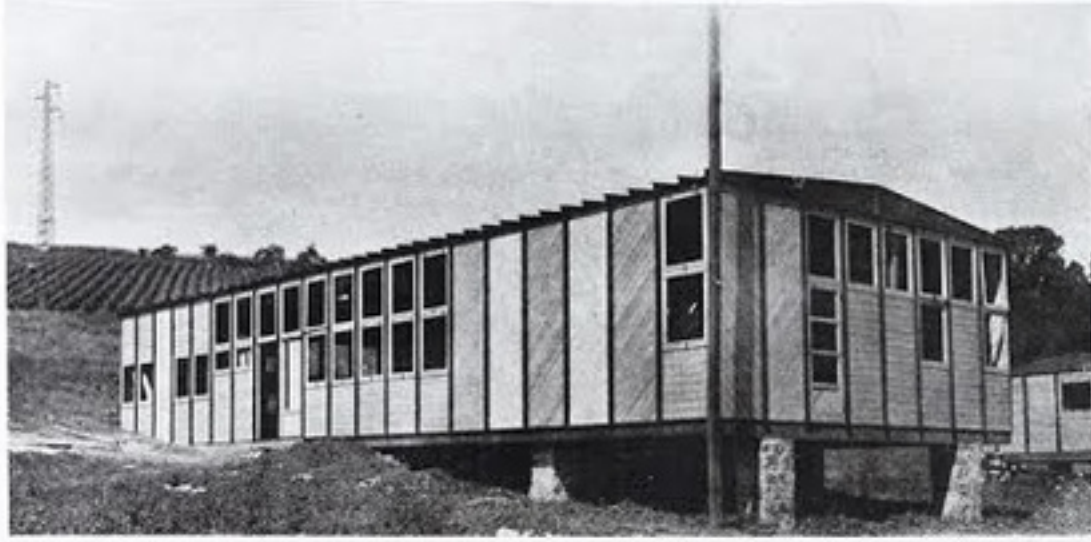


(/uploads/7/3/9/7/7397659/7101461_orig.jpg)

April 2014
(/blog/archives/04-2014)
March 2014
(/blog/archives/03-2014)
February 2014
(/blog/archives/02-2014)
January 2014
(/blog/archives/01-2014)
December 2013
(/blog/archives/12-2013)
November 2013
(/blog/archives/11-2013)
October 2013
(/blog/archives/10-2013)
September 2013
(/blog/archives/09-2013)
August 2013
(/blog/archives/08-2013)
July 2013 (/blog/archives/07-2013)
June 2013
(/blog/archives/06-2013)
May 2013 (/blog/archives/05-2013)

CATEGORIES

All (/blog/category/all)
Advertisement
(/blog/category/advertisement)
Architecture
(/blog/category/architecture)
Collecting Design
(/blog/category/collecting design)
Decorative Arts
(/blog/category/decorative arts)
Decorative-arts
(/blog/category/decorative-arts)
Exhibitions
(/blog/category/exhibitions)
Fashion
(/blog/category/fashion)
Flowers
(/blog/category/flowers)
Furniture
(/blog/category/furniture)
Glamour
(/blog/category/glamour)
Graphics
(/blog/category/graphics)
Hotel Design
(/blog/category/hotel design)
Industrial Design
(/blog/category/industrial design)
Industrial-design
(/blog/category/industrial-design)
Interiors
(/blog/category/interiors)
Jewelry
(/blog/category/jewelry)
Landscape Design
(/blog/category/landscape design)
Lighting
(/blog/category/lighting)
My Design Store
(/blog/category/my design store)
Sculpture
(/blog/category/sculpture)
Silver
(/blog/category/silver)
Style (/blog/category/style)
Tableware
(/blog/category/tableware)
Textiles
(/blog/category/textiles)
Transportation
(/blog/category/transportation)
Travel
(/blog/category/travel)
Vlogs
(/blog/category/vlogs)



VUE EXTERIEURE D'UN CENTRE COLLECTIF

APPLICATION DU SYSTEME DE CONSTRUCTION DES ATELIERS JEAN PROUVE
PAR PIERRE JEANNERET. Architecte



1. PLANCHER ET CHEVALETS



2. POSE DES ELEMENTS DE COUVERTURE

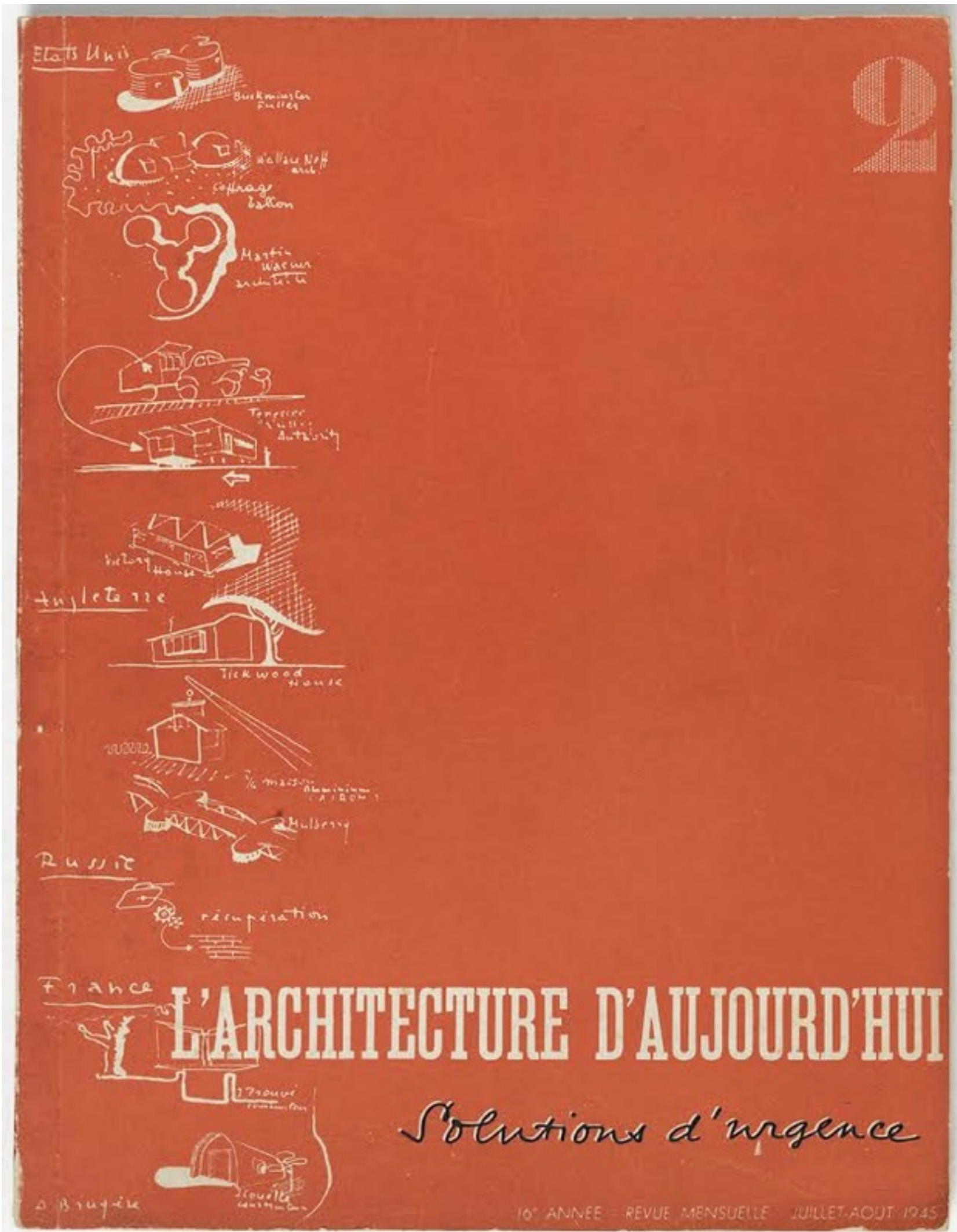


3. VUE D'ENSEMBLE DE L'OSSATURE



4. INTERIEUR

(/uploads/7/3/9/7/7397659/4853429_orig.jpg)



(/uploads/7/3/9/7/7397659/6324910_orig.jpg)



(/uploads/7/3/9/7/7397659/8023257_orig.jpg)



(/uploads/7/3/9/7/7397659/466579_orig.jpg)

 Like 0

 Tweet 0

0 Comments (<http://www.daniellaondesign.com/blog/jean-prouve-and-the-scal-issoire-1939#comments>)

Leave a Reply.

Nom (demandé)

E-mail (non publié)

Site Web

Commentaires

M'avertir des nouveaux commentaires se rapportant à cet article par email

(http://www.daniellaohad.com/)

Home (/) | About (/about.html) | Contact
(mailto:daniella.ohad.nyc@gmail.com)

Daniella On Design 2014. All Rights Reserved.