



CHARLES RIVA COLLECTION

Laffanour / Galerie Downtown Paris x Charles Riva Collection

LEVEL exhibition

Paris : March 24th to April 29th 2023

Brussels : April 19th to July 1st 2023

Laffanour / Galerie Downtown Paris, in collaboration with the Charles Riva Collection, presents the exhibition *LEVEL*, an encounter between modern and contemporary design and works by great names in contemporary art.

This collaboration is divided into two phases: a first exhibition in Paris at the Downtown Gallery from March 24th to April 29th 2023, and the other at the Charles Riva Collection in Brussels, from April 19th to July 1st 2023.

After the success of his collaboration with Galerie Perrotin (exhibition *La Cité Universitaire* by Jean Prouvé, from January 19th to February 25th 2023), François Laffanour is once again bringing design furniture into dialogue with contemporary art. In partnership with the collector Charles Riva, he highlights the works of great 20th and 21st century designers.

Charles Riva is particularly fond of this idea of putting works of different origins in relation, which stems from his desire to break away from the *white cube* concept which is typical for contemporary art galleries. The collaboration with François Laffanour, whom he has known for a long time, was therefore a natural choice: a cross between furniture and graphic arts, mutually enriching each other, with pieces of exceptional quality, hence the ambitious title of the exhibition *LEVEL*.

The exhibition presents on one hand, modern design, with major figures such as Jean Prouvé, Pierre Jeanneret and Le Corbusier, enhanced with some poetic design pieces by contemporary Korean designer, Choi Byung Hoon. On the other hand, the public will discover a selection of works by contemporary American artists such as Paul McCarthy, Richard Prince and the conceptual artist Christopher Woo. The exhibition creates an aesthetic complementarity between these two worlds, under the watchful eye of François Laffanour and Charles Riva. Through this collaboration, the duo implement the vision of art they share: to enhance the works by contextualizing them, by creating real living spaces at the crossroads of interior architecture.



Jean Prouvé
Lecture Hall bench, ca. 1956
H. 36 1/2 x L. 76 x P. 18 in

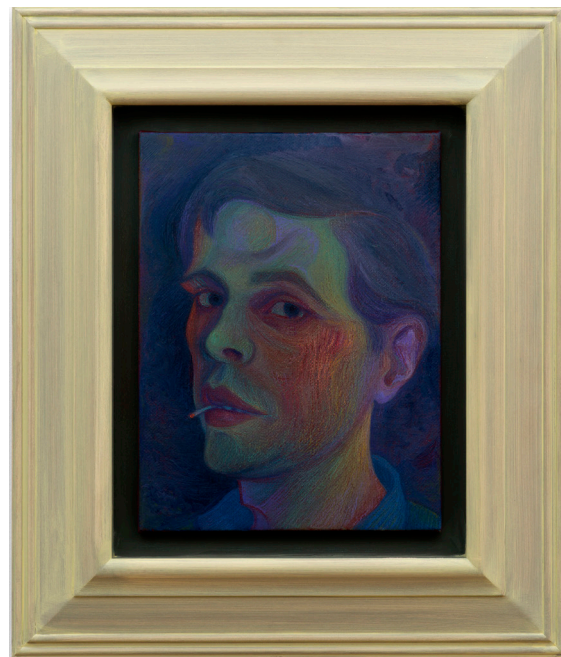


Choi Byung Hoon
Afterimage 011-375, 2011
W. 49.2 x D. 20.5 x H. 25.6 in

CHARLES RIVA COLLECTION



Christopher Wool
Untitled, 2007
Silkscreen ink on paper
72 x 55 1/4 in



Steven Shearer
Scratchy Cheek, 2015
Oil paint and oil pastel on jute
15.9 x 12 in



Le Corbusier
Floor Lamp CL VII, ca. 1956
H. 86 3/4 in



Pierre Jeanneret
"Library" chair, ca. 1959-1960
H. 30.9 x W. 17.7 x D. 19.3 in



CHARLES RIVA COLLECTION

ABOUT FRANÇOIS LAFFANOUR

Since its opening in the early 80's, the Laffanour / Galerie Downtown Paris, created by François Laffanour, has been exploring and exhibiting the furniture of 20th century architects, contributing to the rehabilitation and valorization of the masters of post-war architecture.

In the aftermath of the Second World War, designers and architects brought a new conception to the art of furnishing, dictated by a need for freedom and efficiency, in the service of a new art of living in an era of technological and scientific development, but also sociological, demographic and social.

The Laffanour / Galerie Downtown Paris also holds the archives of the Steph Simon Gallery which, from 1956 to 1974, represented and published the furniture of Charlotte Perriand, Jean Prouvé, Serge Mouille, Georges Jouve and Isamu Noguchi.



François Laffanour ©DePasquale+Maffini

À PROPOS DE CHARLES RIVA

The Charles Riva Collection is a collection of contemporary art, mainly American, located in a magnificent 14th century mansion in the Louise district of Brussels.

Charles Riva opened his first gallery in New York at the age of 23, then two in London and two in Paris called Sutton Lane. Not being satisfied with the gallery business model, he finally decided to close all his galleries without losing his passion for collecting.

Charles Riva's collection grew in size, became more and more important so he decided to open it to the public in 2008, moving to Brussels and organizing an average of two exhibitions of contemporary art per year.



Charles Riva in front of Lee Krasner's Comet (1970).
© HV photography. Courtesy Collection Charles Riva

