

Laffanour Downtown / Paris gallery
participates in TEFAF NEW YORK 2024

and presents masterpieces by

JEAN PROUVÉ | CHARLOTTE PERRIAND | JEAN ROYÈRE | SERGE MOUILLE | RICHARD TEXIER

From 10th to 14th May, 2024
643, Park Avenue Armory, 10065 New York
Booth 376



Jean Prouvé (1901 - 1984)
Meudon door, ca. 1949

For this prestigious 10th edition of TEFAF New York, the gallery will be presenting several exceptional pieces by Jean Prouvé, the visionary architect-designer of the last century whose work laid the foundations of modernist design. A monumental door known as the *Meudon* door will capture the public's attention. Designed in 1949 for the Standard house in Meudon, this aluminium door with six windows bears witness to the innovative research carried out by the architect for his major project of industrialised houses. The gallery will also be exhibiting an adjustable wall lamp, called *Potence*, made from folded sheet steel and yellow-lacquered tubular metal, and designed by Jean Prouvé for the dismantled pavilion at the Vantoux school in Moselle.

A modernist sideboard, also by Jean Prouvé, will be presented in New York. The advent of this model of demountable sideboard, designed specifically for the domestic market and mainly dedicated to furnishing emergency housing, is a real feat. Its structure, made from folded and lacquered sheet steel, is both robust and elegant. The two sliding doors and wooden top add to its charm and practicality, making this sideboard a versatile and aesthetic solution to post-war home furnishing needs.



Jean Prouvé (1901 - 1984)
Bahut, Model no. 150, 1952

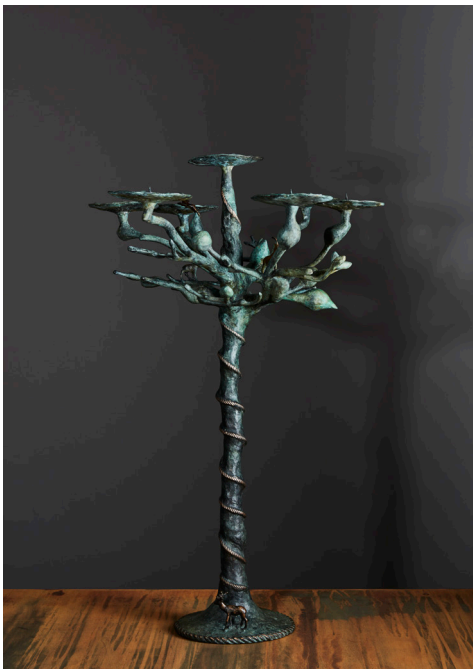
Downtown gallery will be showcasing Jean Royère's iconic Ours Polaire sofa, specially designed by the designer for the French Embassy in Russia in the 1930s. An oak console with a decorative glass top will add a further touch of refinement to the setting. Finally, the combination of lighting by Serge Mouille and Richard Texier, one an expert in metalwork and the other in bronze, will lend a distinctive elegance to the stand as a whole.



Jean Prouvé (1901 - 1984)
Flavigny Table (Granito), ca. 1945



Jean Royère (1902 - 1981)
Ours Polaire sofa, ca. 1952



Richard Texier (1955)
Deer Candelabra Candlestick, 2002



Jean Royère (1902 - 1981)
Console, ca. 1955



© DePasquale+Maffini

ABOUT DOWNTOWN GALLERY

Since it opened in the early 1980s, Galerie Downtown, founded by François Laffanour, has been exploring and exhibiting the furniture of 20th-century architects, helping to rehabilitate and promote the masters of post-war architecture.

In the aftermath of the Second World War, designers and architects brought a new approach to the art of furnishing, dictated by a need for freedom and efficiency, in the service of a new art of living in an era of technological and scientific development, as well as sociological, demographic and social development.

Downtown gallery also holds the archives of Steph Simon gallery, which from 1956 to 1974 represented and published furniture by Charlotte Perriand, Jean Prouvé, Serge Mouille, Georges Jouve and Isamu Noguchi.



Press contacts FAVORI

233, rue Saint-Honoré 75001 - T +33 1 42 71 20 46
Grégoire Marot - Caroline Boudehen - Anastasia Sagaydak
caroline@favoriparis.com - anastasia@favoriparis.com